



# ***Going Beyond Inspirational***

**Presented by  
Nina G, PsyD  
[www.ninagcomedian.com](http://www.ninagcomedian.com)**



# **Talking to a Person with Speech Difficulties in the classroom**

- **Never finish sentences—you will probably be wrong.**
- **Be conscious of how the speech is impacting you.**
- **Create an environment where the student can speak freely.**
- **Discuss if they would like to read in class.**



**Marilyn Monroe: Actress who stuttered**









# Two Roads to Addressing SWDs

- **Accommodations for specific disability related needs**
- **Universal Design**



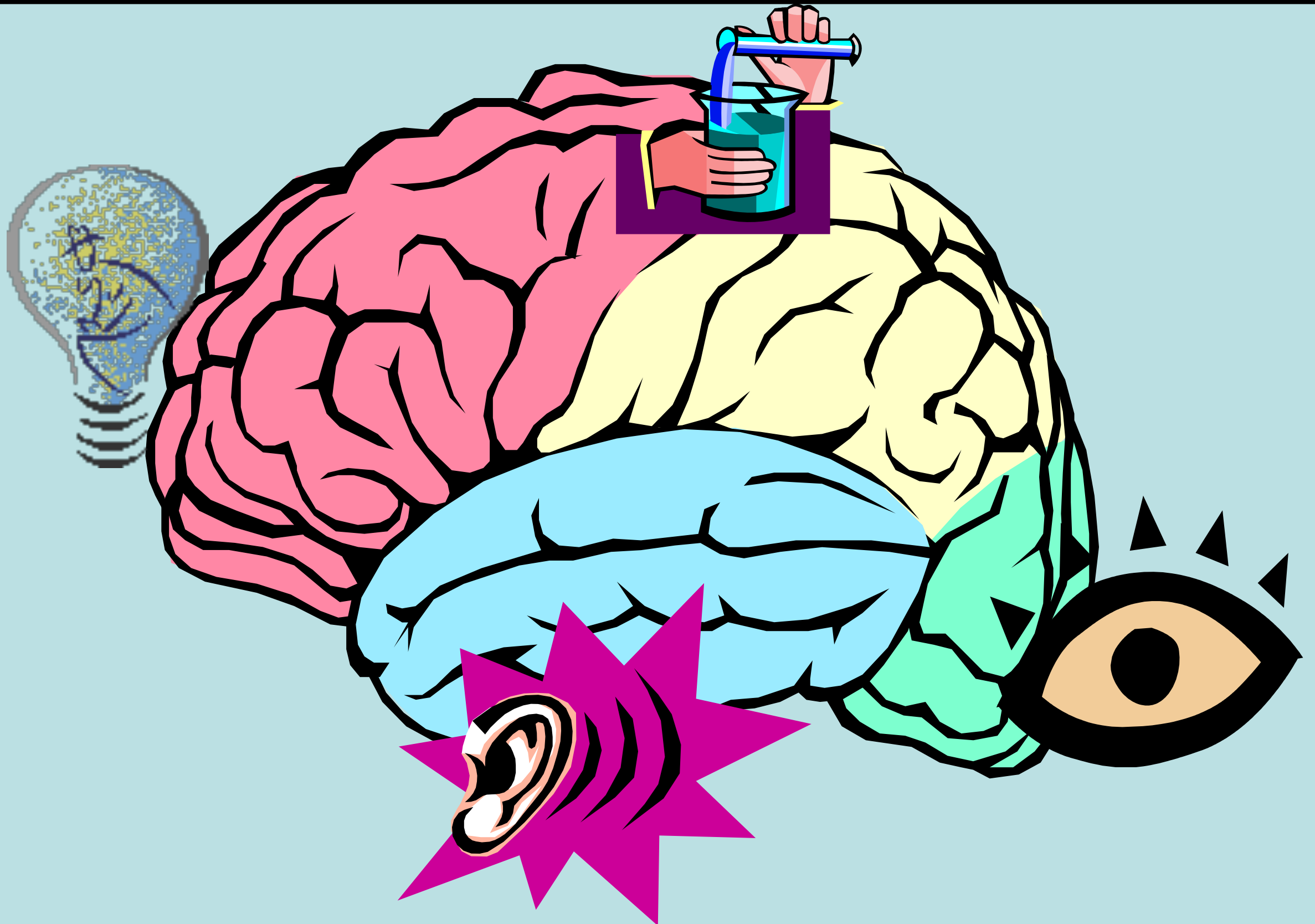
# What does success mean for students with disabilities?

- **Opportunity to build on resiliency**
- **Use skills and talents that have been traditionally under utilized in school**
- **Demystify and personalize what disability means**
- **Going beyond images of inspiration**



**Michelle Hernandez, PhD:  
Podcast: The Disability Guru**

# What is Multi-Modal Teaching

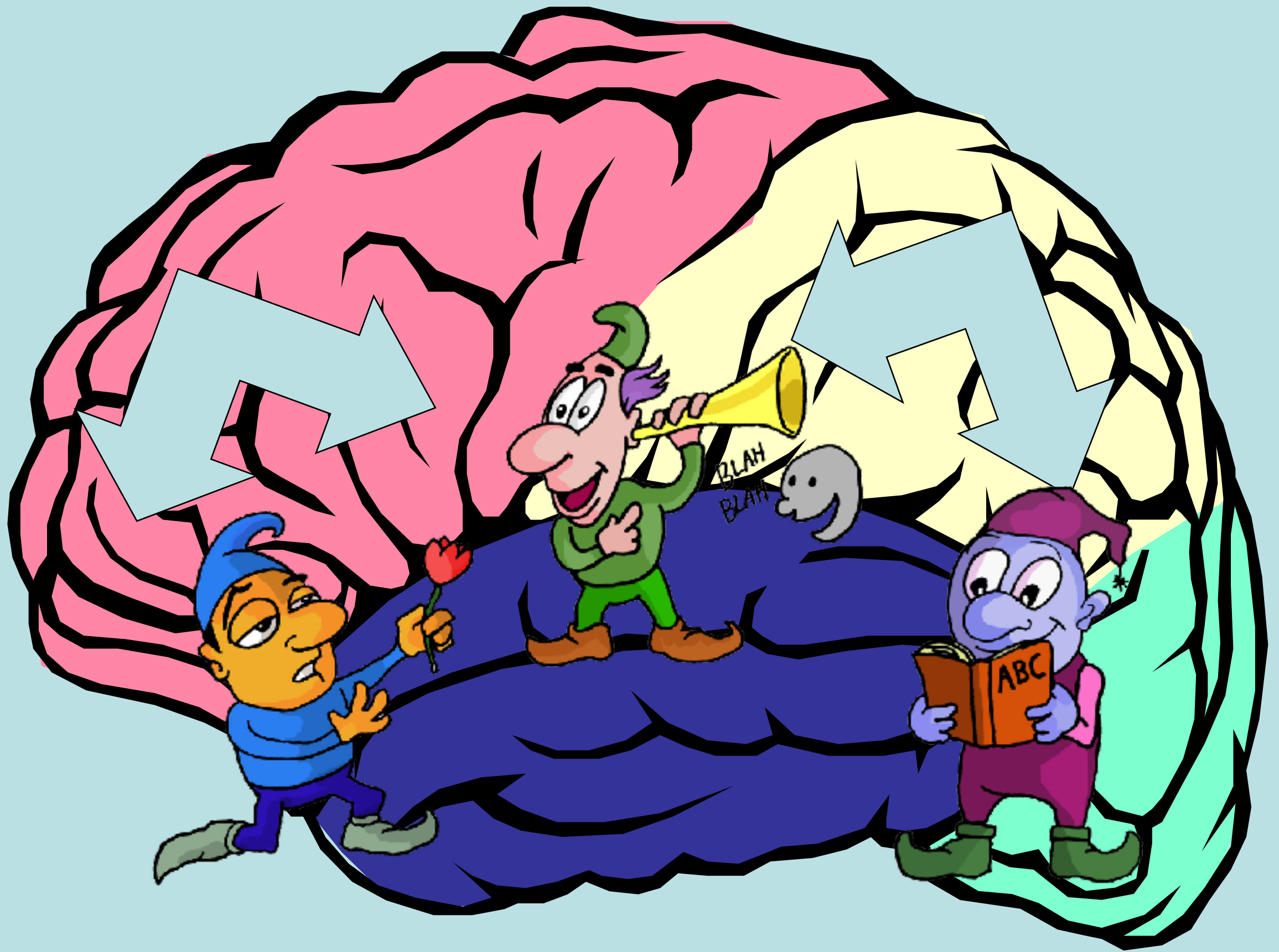


Copyright, Nina G.



- The castaways were standard on the island.
- The castaways were **stranded** on the island.





People Generally  
Remember:

People Are Able To:  
(Learning Outcomes)

10% of what they Read

20% of what they Hear

30% of what they See

50% of what they hear  
and see

70% of what they  
say and write

90% of what  
they do

Read

Hear

View Images

Watch Video

Attend Exhibit/Sites

Watch A Demonstration

Participate in Hands-On Workshop

Design Collaborative Lessons

Simulate or Model a Real Experience

Design/Perform a Presentation - Do The Real Thing

Define

List

Describe

Explain

Demonstrate

Apply

Practice

Analyze

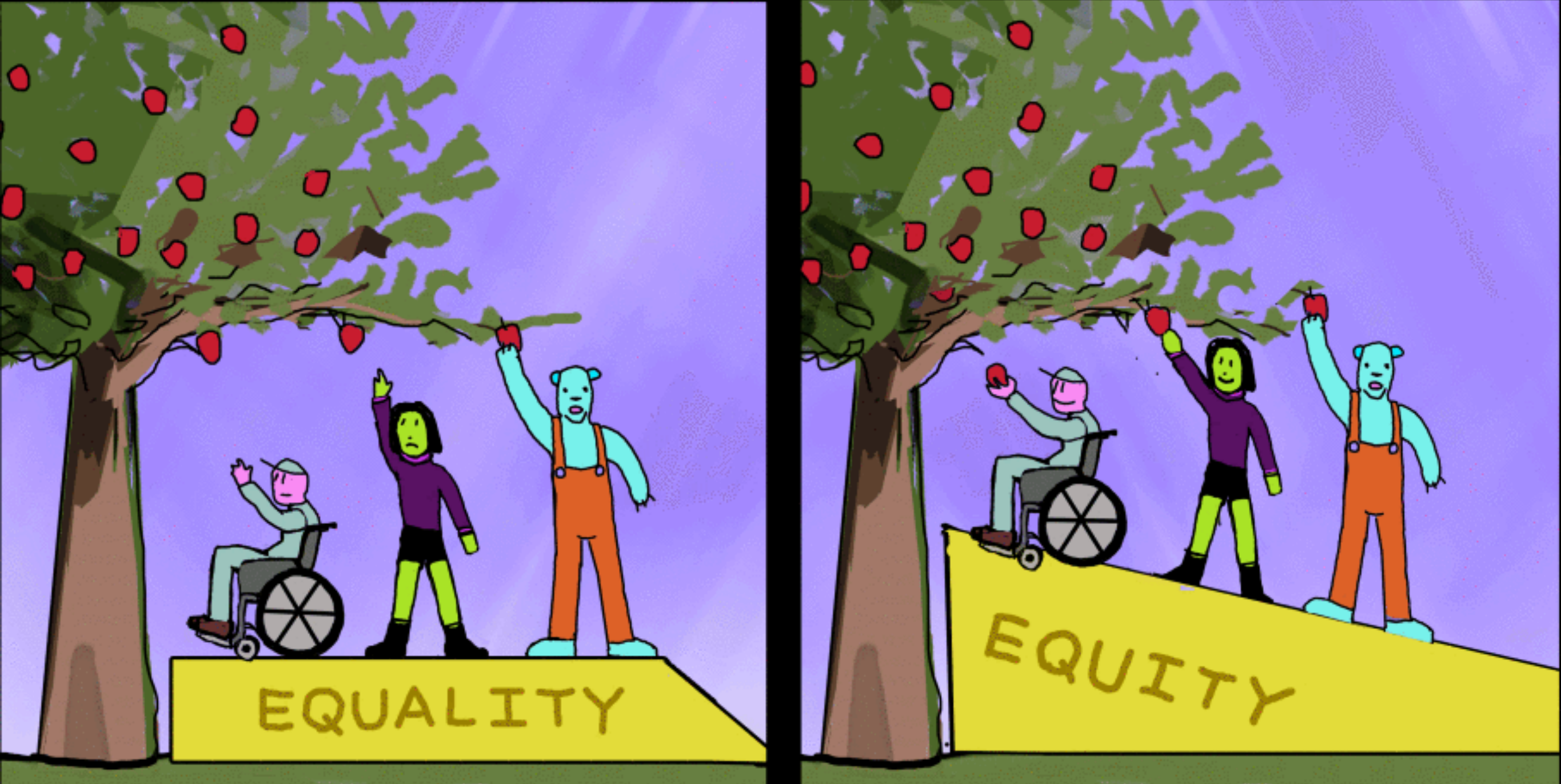
Design

Create

Evaluate

Dale's Cone of Experience





**In pairs and small groups discuss one or more of these:  
What does *compassion informed education* look like?**

